



Te Hā o ngā Toi

Te Rautaki mō Ngā Toi Māori 2019-2024



KOTAHI, ATAMIRA DANCE COMPANY

Whakaahua: Nā Charles Howell. Kaikanikani: Bianca Hyslop.
Kākahu: Ruth Woodbury/Rāranga Creations. Kaitiaki: Jack Gray.

Whakatauki

*Te Waka Toi, he pātaka
whakaarahia i roto i te pā
tūwatawata o ngā puna waihanga.*

He kupu whakataki mō tā mātou rautaki toi Māori, mō Te Hā o ngā Toi

Ko Te Hā o ngā Toi te rautaki a Toi Aotearoa e whai nei ki te hāpai i ngā wawata o ngā ringatoi me ngā mātanga toi Māori hei painga mō ngā tāngata katoa o Aotearoa. Ka whakamāramahia te āhua o tā mātou aro ki ngā mahi whakawhanake e hihiko ai te ngākau me te hinengaro, me te āhua o tā mātou whakahoa ki ētahi atu e whaihua ai ngā putanga, kia puāwai ai ngā toi Māori i te kāinga, i te ao anō hoki.

Kei te tūāpapa o Te Hā o ngā Toi tētahi anga mātauranga Māori, ā, kei taua anga te mātauranga – te auahatanga, te tuku mātauranga me te whakaū anō i te mātauranga.

Nā te āhua o ngā mahi pāpori a ngā tāngata katoa o Aotearoa o nā noa nei e pā ana ki te te reo Māori i mōhio ai mātou kua tae te wā e tahuri ai mātou ki te āta hāpai i ngā toi me te ahurea Māori, huri noa.

Koinei te wā tuatahi kua pēnei tā mātou whakapuaki i ā mātou whāinga ā-rautaki mō ngā toi Māori. Koinei hoki te wā tuatahi kua whakamārama mātou i ō mātou hiahia mō te āhua o tā mātou mahi ngātahi ki te hunga toi, ahurea anō hoki, mō te āhua hoki o te mahi tika i te taha o ngā umanga ā-Karauna me ngā whakahaere kia kaha ake ai tā mātou pā ngātahi ki ngā ao o ngā tāngata o Aotearoa mā roto mai i ngā toi Māori.

I tā mātou whakapā atu ki te rāngai i rongo mātou i ngā hiahia kia nui ake te mahi ngātahi me te whakarato i ngā haporī nō reira mātou, kia whakaūngia hoki te whakaaro e kore e taea te toi, te ahurea me te tangata te wewehe i te ao Māori. Waihoki, i rongo mātou i te whai tikanga o te whakarite wāhi e puta mai ai he whakaaro, he rongoā hoki i ngā ringatoi me ngā haporī, pēnei i te marae, te hapū me te iwi, i ngā tōpūtanga ringatoi me ngā hinonga Māori. E tutuki ai tēnei, ka hoki mātou ki te mahi i te taha o te rāngai ki te āta titiro, ki te hoahoa, ki te whakaputa anō hoki, tīmata mai ana i ngā kaupapa o te whare tapere.

E rua ngā pou whakarara o Te Hā o ngā Toi.

E hāngai ana te pou tuatahi ki te mahi ngātahi, tuatahi ake i te taha o ngā whakahaere ā-Karauna me ngā umanga ahurea matua he mahi nui ā rātou mahi ki te hāpai i ngā toi Māori kia kaha ake ai te pānga.

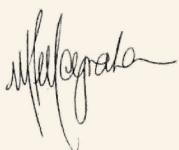
E hāngai ana te pou tuarua ki te āhua o tā mātou aro ki ā mātou mahi ake i roto i a Toi Aotearoa ki te whakapakari i ngā toi Māori mā te:

- whakapakari i te whakawhanaketanga o te hanga toi Māori
- whakakaha i te toro a te pāpori ki ngā toi Māori
- whakapakari i te rāngai ki te hāpai i ngā wawata mō ngā toi Māori.

E whakaū nei a Toi Aotearoa mā te tautoko i Te Hā o ngā Toi i te ārahi mai a te Komiti Māori ā-ture, a ngā tini ringatoi, mātanga anō hoki, a ngā kaiwhakaū huringa me ngā kaitaunaki kua whāi wāhi mai, kua tuku nei hoki i ō rātou aroha, kua pā mai hoki ō rātou wairua ki te whakamōmona i tēnei rautaki.

Toi te kupu - Toi te mana - Toi te whenua.

Ka whakaputa mātou i tētahi mahere hei tautoko i te whakatinanatanga i te wāhanga tuatahi o te tau 2019 e whakamārama ana i te āhua o tā mātou mahi tahi ki te rāngai tūmatanui me te rāngai tūmataiti ki te hoahoa, ki te whakaputa me te aroturuki i ngā mahi me ngā putanga o Te Hā o ngā Toi.



Michael Moynahan
Chair
Arts Council



Dean Whiting
Chair, Te Komiti Māori
Arts Council





RINGA REHE TOI KAITITO WAIATA, KAIWAIATA A MAISEY RIKA, KEI WHAKATĀNE

Nā Erica Sinclair te whakaahua.

Rārangi Kaupapa

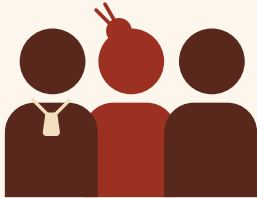
He kupu whakataki Te Hā o ngā Toi	02
Te Hā o ngā Toi: Ka kite ahau i te aha?	07
Te rārangi kupu	08
Te wāhanga tuatahi: Te Horopaki	11
Te Anga Mātauranga Māori: Te Waka Toi	13
Te wāhanga tuarua: Te Mōhiotanga	17
Tā toi Aotearoa Titiro	18
He whakaahua o te tautoko a te Karauna i ngā toi me te ahurea Māori	20
Tā Te Rāngai Titiro	22
Te wāhanga tuatoru: Te Rautaki	27
Te anga whakamua	28
Ka aha mātou?	29
Te wāhanga tuawhā: Te Anamata	33
Moemoeā	34
He Kōrero Anamata	36
Mana whakahaere	38



TE WHĀNAU-Ā-APANUI E HAKA ANA I TE AHUREI I TE MOANA NUI A KIWA, GUAM 2016

Te Hā o ngā Toi

KA KITE AHAU I TE AHA?



Mehemea he ringatoi Māori koe...

Ka whai pūtea tautoko koe mai i Toi Aotearoa hei hiki i āu mahi toi Māori, ā, ka whai wāhi hoki ki ngā kaupapa hou.



Mehemea he rōpū Toi e whiwhi pūtea ana i a mātau...

Ka mahitahi a Toi Aotearoa ki tō taha ki te whakatauiria i ngā mahi papai me ngā mahi tauawhi i ngā toi Māori, ā, ka whai wāhi anō ki te hanga i ō mātau kaupapa hou.

Mehemea e rikarika ana koe ki ngā Toi Māori...

Ka whai wāhi ake koe ki te kite i ngā toi Māori huri noa i te motu, atu i ngā pokapū nui.



Mehemea he rōpū Karauna, he tari ahurea rānei...

Ka karangahia e Toi Aotearoa kia hono mai ki a mātau ki te whakatinana i Te Hā o ngā Toi, hei kōkiri i ngā toi Māori.



Te rārangi kupu

Kei te tūāpapa o tā mātou rautaki mō ngā toi Māori, o Te Hā o ngā Toi, ngā ariā Māori matua, ā, kei tēnei rārangi kupu ngā whakamārama kia kite wawe ai ngā kaipānui kāore i te mārāma mai ki ēnei kupu i te mārāmatanga.

Mātauranga Māori: ko te whakamāoritanga ake, ko ‘Māori knowledge’. He kupu hou ēnei. E kapi nei i ēnei kupu ngā tikanga, ngā uara, ngā ariā, ngā rapunga whakaaro, ngā tirohanga ā-ao me ngā mārāmatanga i puta tonu mai i tā te ahurea Māori titiro. Kei ngā kupu nei ngā pūnaha mātauranga o mua, o nāiane anō hoki. I ngā mahi o ia rā, he karangatanga matua te mātauranga Māori e pā atu ana ki ngā pūnaha mātauranga pēnei i te whakapapa, te tikanga Māori, te manaaki me ngā taonga tuku iho Māori.

Ngā toi Māori: e kapi ana i ēnei kupu ngā mahi toi Māori tuku iho, pēnei i te tā moko, te tārai waka, te waiata, te mōteatea, te raranga, te whakairo, te reo, te whaikōrero, te karanga, te tukutuku, te kōwhaiwhai, te kapa haka, te waiata ā-ringa, te waiata tawhito, te poi, te whakaeke, te whakawātea, te waiata, te haka, te mau rākau, te taonga puoro me ngā tākaro Māori o mua. E kapi ana hoki i ēnei kupu ngā mahi a ngā ringatoi Māori, puta noa i ngā tūmomo mahi toi hou.

Te rāngai toi o Aotearoa: e hāngai ana tēnei karangatanga ki te hapori toi o Aotearoa, ki ngā ringatoi, ngā mātanga me ngā whakahaere katoa ka whai wāhi ki te waihanga, ki te whakaatu, ki te whakaputa hoki i ngā toi o Aotearoa. Ka hāngai anō pea te kupu ‘rāngai’ ki ngā ringatoi, ngā mātanga me ngā whakahaere e whai nei i tētahi tūmomo mahi toi kotahi, pēnei i te rāngai kanikani, i te rāngai puoro me te rāngai mātātuhi.

Whai wāhitanga: e hāngai ana tēnei kupu ki te āta whai wāhi mai ki ngā mahi, kua whakamāramahia mai koinei “te whai wāhi mai a te tangata takitahi, a ngā rōpū me ngā hapori hoki ki te waihanga me te whakaatu (i ngā mahi toi).” Kei te āhua o te horopaki ā-ahurea, engari he nui ake pea i te āta whai wāhi mai e tohua mai ana i te whai wāhi mai a tētahi ki ngā toi ā-hapori. Kei ngā mahi ā-hapori e hāngai ana ki te whakaū me te tuku i ngā tikanga ā-ahurea, ā-toi hoki te whai wāhi torohū: ‘whai wāhi’ hohe ai, torohū ai hoki ngā hapori i te wā e ako ana, e mahi ana, e whakaatu ana, e whakamaioha ana hoki i ā rātou tūmomo toi.

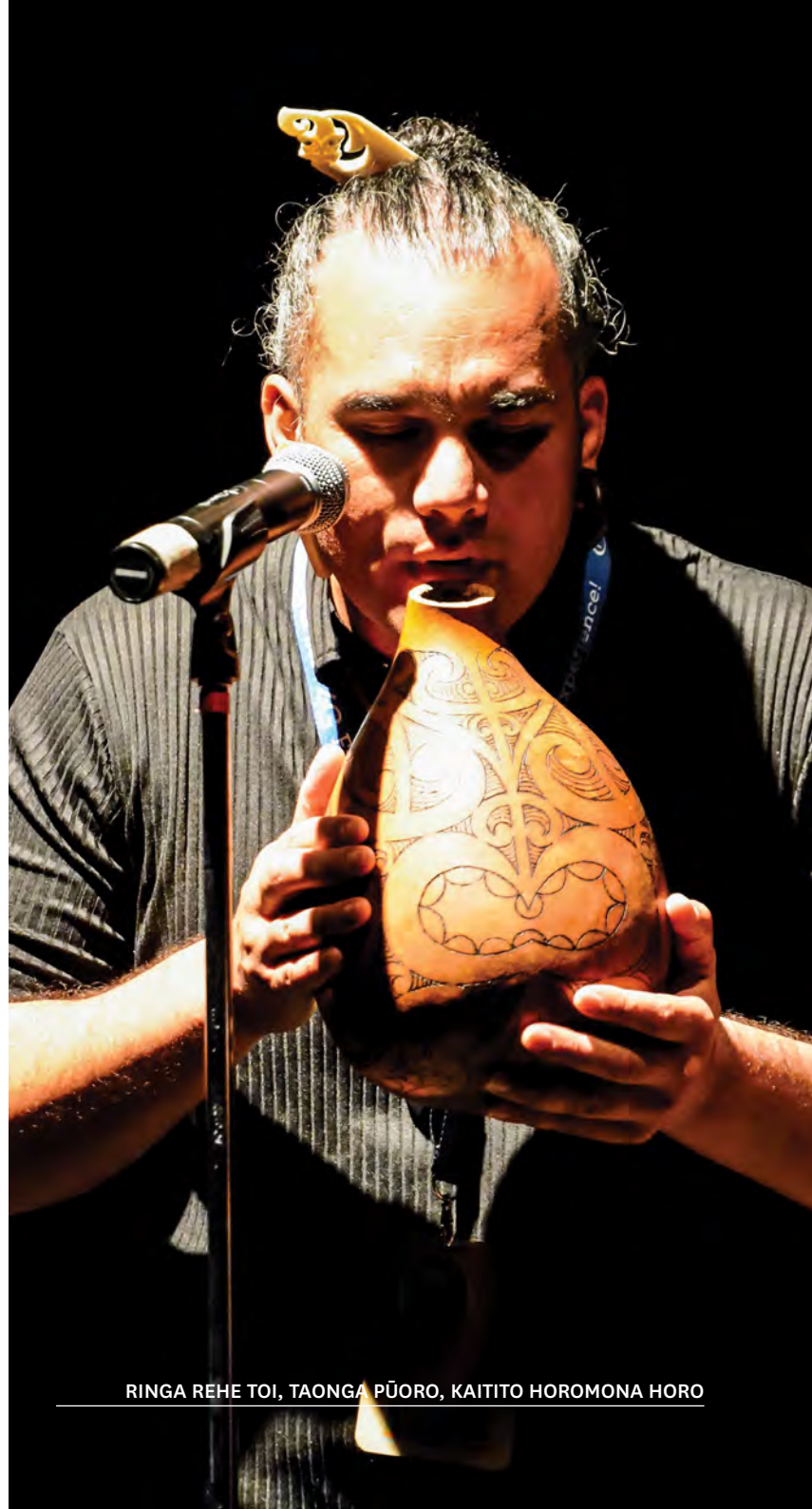
Pātaka: he pātaka kua whakarewahia hei pupuri, hei tiaki hoki i ngā taonga a te iwi.

Poutama: he tauira arapiki e kitea ana i ngā tukutuku me ngā whāriki e tohu ana i ngā whakapapa, i ngā taumata rerekē o te ako, i ngā whakatutukitanga me te tukanga e tau ai te māramatanga.

Ngā mātanga: he whānui kē atu tēnei rōpū i ngā 'ringatoi' anahe. E kapi ana i tēnei karangatanga ngā tāngata e whai wāhi ana ki te whakahaere i tētahi kaupapa, pēnei i ngā kaitaki, ngā kaiwhakahaere atamira, ngā pūkenga hangarau, ngā kaiwhakaputa, ngā ētita, ngā kaiwhakamāori, ngā kaurauhī, ngā māngai me ngā kaihoko, tae atu hoki ki ngā mātanga kei ngā hapori e mahi ana. Ka kapi hoki i tēnei karangatanga ngā tāngata kāore pea e karangahia rātou he ringatoi e rātou anō, engari e whai wāhi nui ana ki te waihanga, ki te whakaatu, ki te whakaputa hoki i tētahi mahi toi.

Hoahoa ratonga: ko te tiki atu tēnei i tētahi hua, i tētahi ratonga hou rānei, kua oti rānei te whakaputa me te whakapai i taua hua, ratonga rānei kia tino hāngai ai ki ngā hiahia o te kaimahi. Ka oti tēnei mā te whakamārama i te raruraru e whai nei mātou ki te whakatika, mā te rangahau me te kōhi taunakitanga, mā te kōtuitui i ngā taunakitanga me te whakamārama i ngā whakaarotau me ngā mea e matetia ana, mā te mahi ngātahi ki ētahi tāngata ki te whakarite i ētahi rongoā me te whakatauiria i aua rongoā ki ngā kaimahi, kātahi ka whakatikahia anō. Kia oti tēnei, ka waihanganahia, ka whakatinanahia hoki e mātou te rongoā.

Whare tapere: e whakamahia ana i tēnei tuhinga hei kupu whakarite mō tētahi wāhi, mō tētahi rōpū, mō tētahi tūhononga ringatoi Māori rānei, ki reira tītarihia ai, whakawhanakehia ai, whakaaturia ngātahitia ai hoki ngā mahi ngātahi ki ngā marea me ngā hapori. Nō te hapori te whare tapere, he wāhi i kōrerohia ai ngā pūrākau, i tū ai te haka, te waiata me ngā tūmomo whakangahau, ā, he āhuatanga nō te noho ā-hapori i Aotearoa, huri noa i Te Moana-nui-a-Kiwa i mua i te taenga mai o te Pākehā.





TĀ PITA SHARPLES NGĀ TOHU A TE WAKA TOI 2018 – I WHAKANUIA E TE MATATINI MŌ ANA MAHI HAKA

Nā Norman Heke te whakaahua.

01

Te Horopaki

Ko te anga o te rautaki a Toi Aotearoa mō ngā toi Māori, o Te Hā o ngā Toi ko:

- Te anga mātauranga Māori o Te Waka Toi Pātaka
- Te rautaki haumitanga o Te Ara Whakamua 2018-2023
- Te ture o The Arts Council of New Zealand/Toi Aotearoa Act 2014

Ko te pūtake o Te Hā o ngā Toi ko:

- **te tūhono ki ētahi atu**, tae atu ki te hapori me te iwi. Nā tā mātou rautaki e ū nei mātou ki te mahi ngātahi ki ngā whakahaere ā-Karauna me ngā umanga ahurea matua. Ko tā mātou whāinga, ko te whakawhānui i te whakawhanaketanga o ngā toi Māori me te whakawhānui i te kitenga o ngā toi Māori i Aotearoa, i te ao anō hoki.
- **tā mātou whakarite huringa**. E miramira ana tā mātou rautaki i ā mātou mahi i te taha o te rāngai i ngā wāhanga e toru, arā:
 1. te whakapakarī i te whakawhanaketanga o te hanga toi Māori
 2. te whakakaha i te toro a te pāpori ki ngā toi Māori
 3. te whakapakarī i te rāngai ki te hāpai i ngā wawata mō ngā toi Māori.



TOHUNGA RINGA REHE TOI CLIFF WHITING, KEI TŌNA TAUPUNI MAHI TOI

Nā Shirley Mullany te whakaahua, mai He Kupenga Hao i te Reo.

Te Anga Mātauranga Māori: Te Waka Toi

He aha a Te Waka Toi?

Ko Te Waka Toi tā mātou Anga Mātauranga Māori e ārahi ana i te horopaki me te pūtake o tā mātou rautaki mō ngā toi Māori, o Te Hā o ngā Toi. E whakaū ana te anga i ā mātou mahi o mua, ā, e tukua ana hoki mā ngā pūnaha mātauranga Māori o mātou tirohanga e ārahi me o mātou hiahia e whakawhenua, e ine ano hoki.

Whakapapa

He mihi kei te ingoa o Te Waka Toi ki te whakapapa o te Poari Toi Māori o mua atu, ki a 'Te Waka Toi', nāna i para te huarahi e whai nei mātou, ā, nāna hoki i taunaki ngā toi Māori mai i te tau 1994 ki te tau 2014.

Ko te Waka Toi he pātaka iringa kōrero, e hono ai tātou mai te whenua ki te rangi me te ao wairua.

He pātaka whairawa ā-ahurea

Ko te pātaka te whakaahua o Te Waka Toi, te whakatinanatanga o te whairawa ā-ahurea, ā, he kaipupuri tautoko, kai whakatupu, mātauranga Māori anō hoki. E rua ngā whakaaro kua herea ki roto, ā, kei te tūāpapa o Te Hā o ngā Toi, arā:

- Mā te whairawa ā-ahurea e whakatupu te hapori katoa.
- Mā te pātaka e tiaki te pitomata anamata.

E whakaata mai ana a Te Waka Toi i te haerenga o Tāne ki te tiki mai i ngā kete o te wānanga hei painga mō te ira tangata. Ko tētahi o ngā kete, ko Te Kete Aronui, e puritia ana i roto te mātauranga, te pai me ngā toi.

E tohu ana a Te Waka Toi i te mātauranga i tikina mai e Tāne, ā, ka maumahara tātou ki ngā kawenga tōpū ki te poipoi, ki te tiaki hoki i te whairawa ā-ahurea hei painga mō ngā uri whakatupu.*

Ko tā Te Waka Toi he whakanakoanako i ngā ao o ngā tāngata katoa o Aotearoa

E awhea ana a Te Hā o Ngā Toi e Te Waka Toi, nā te mea:

- he whakapuakanga tēnei o te uara me te whai tikanga o ngā toi Māori
- he ariā torowhānui tēnei e hāngai ana ki tā tātou noho i tēnei ao nei
- e tohua ana tētahi tirohanga whānui ki te hauora e whai wāhi mai ai te uara ā-pāpori, ā-ahurea, ā-ōhanga anō hoki o ngā toi Māori.

*Kei Te Ara, te mātāpunenga i hangaia e te Manatū Taonga (www.teara.govt.nz) te roanga atu o ngā kōrero mō Tāne me ngā kete o te wānanga. E mōhio ana mātou kei tēnā iwi, kei tēnā iwi Māori āna anō kōrero.

Te Anga Mātauranga Māori Framework

Te Waka Toi, he pātaka whakaarahia i roto
i te pā tūwatawata o ngā puna waihanga



Tekoteko: Ko Tāne (Manahau)

E whakanuia ana te manahau a Tāne nāna ngā kete o te wānanga i tiki atu hai taonga mō tātau te tangata.



Koruru: Ko te Kete Aronui (Kawenga)

I waenganui i aua kete ko Te Kete Aronui e kī ana i te mātauranga, te ngākaupai, me ngā mahi toi. E tohu ana tēnei pātaka i te mātauranga i tikina e Tāne i tōna haerenga pakeke, kia maumahara ai tātau ki te manaaki, ki te tiaki i ō tātau kawenga, ā, haere ake nei.



Paepae Kaiāwhā (Whakarite)

E tohu ana te Paepae Kaiāwhā i te hononga kei waenganui i ngā rā ō mua me ngā rā ōnāianeī. Mā tēnei ka whai whakaaro atu, ka whakatipu i te hononga.



Pou Aronui (Hononga Whenua)

Mā te Pou Aronui ka puritia tō tātau hononga ki a Papatūānuku otirā ki te mauri me te mātauranga hoki e tau ai tō tātau noho.



Maihi (Whakanaketanga)

Mā ngā hoahoa pākake ka mahara tātau ki te hōhonutanga o ngā taonga kei roto i ō tātau mahi toi, ā, ka tohu anō i te whanaketanga o ngā mahi urutaunga, mahi auaha hoki.



Mahau (Hononga Tipuna)

Kei roto i te mahau ngā tipuna nā rātau te huarahi i para mō ngā ringatoi o ēnei rā. Mā ēnei āhuatanga whakapapa, e motuhake ai ō tātau mahi toi.

POU TARĀWAHO O TE PĀTAKA

He aha?

Ka whakarato Te Pātaka i tētahi pou tarāwaho ā-huatau e taea ai e te tirohanga Māori te ārahi i ngā whakatau kia kōkiri whakamua ngā mahi.

Te Waka Toi



Kūaha (Maitanga)

He tohu te kūaha o te maitanga. Mā tēnei e pātari ai tātau ki te nui o ngā taonga e tiakinaana, e hāpaitia ana e te pātaka.



Amo (Hapori)

Ko ngā hapori kei te hāpai i ngā mahi toi. Ka whakakaha, ka kawe ngā amo i te hīkoi a Te Waka Toi, ā, ka tū anō hei māngai mō ngā whānau-hapū-iwi.



Huapae (Āwhina me te Ākina)

Ko te huapae te hanganga ka tautoko i ngā ihirangi o te pātaka. E tohu ana tēnei i te mahi a Te Waka Toi me ngā tari kāwanatanga ki te whakapakari, ki te hapahapai i ngā mahi toi.



He aha ai?

Ka whakapai ake Ngā Toi Māori i te orange ahurea me te whakakaha i te tuakiri.

Pehea?

Ko te pou tarāwaho he matapihi mō Toi Aotearoa e taea te kite i ngā taonga toi Māori ahurea e whakahaumako i o tatou mahi toi a e whakahiki ana ki ngā rāngai toi mō te katoa o Aotearoa.



RINGA REHE TOI DEREK LARDELLI, E WHAKAHOU ANA I TĒTAHI WHAKAIRO KEI TŌNA TAUPUNI MAHI

Nā Norman Heke te whakaahua.

02

Tā mātou e mōhio nei mā te titiro whakaroto me te kōrero ki te rāngai

I whakaritea a Te Hā o ngā Toi, tā mātou rautaki mō ngā toi Māori i muri i te whakatātarenga o tā Toi Aotearoa mahi o nāianei me tana whakapā atu ki ngā ringatoi me ngā mātanga toi Māori. Ko tā mātou i whai ai kia hōhonu ake tō mātou mōhio ki ngā hiahia o te rāngai tuku pūtea whānui ki ngā toi me te ahurea, ki ngā toi Māori hoki me tā te rāngai whai wāhi mai ki ngā toi Māori.

E rua ēnei tirohanga i whakaatu mai ki a mātou e hāpaitia ai ngā toi Māori me:

- tūhono mātou ki ētahi atu, ā, me mahi ngātahi hoki ki te whakarite i tētahi pūnaha e kaha ake ana ki te tautoko i ngā toi Māori
- whakarite huringa mātou mā te:
 1. tautoko i ngā ringatoi me ngā mātanga toi Māori ki te whakapakari i ā rātou mahi me ā rātou umanga
 2. whakanui i ngā huarahi e toro ai te pāpori ki ngā toi Māori
 3. tautoko i te rāngai o ngā toi Māori kia pai ake ai tana tūhono ki te rāngai toi whānui me ngā tāngata tokomaha o Aotearoa.

Tā Toi Aotearoa Titiro

I te arotakenga o ā mātou mahi o nāianeī, i tautuhia ētahi wāhanga e whai wāhi ana, e hāngai ana hoki ki Te Hā o ngā Toi, otirā ki te ahunga whakamua o te rautaki.

Te tūhono ki ētahi atu

He whakahaere āhua iti a Toi Aotearoa i te horopaki tuku pūtea ki ngā toi me te ahurea. E mōhio ana mātou ka taea e mātou tā mātou mahi i te taha o ngā whakahaere ā-Karauna me ngā umanga ahurea matua te whakatika ake hei whakapakari i ngā toi Māori.

E mōhio ana mātou nā tā mātou titiro ki te tautoko a te Karauna i ngā toi me te ahurea Māori (tirohia te whārangi 20) arā ētahi whakahaere huhua e whai wāhi ana, me te aha anō, kāore i te mārama te titiro ki te rāngai o ngā toi Māori. Mehemea i mārama ake te titiro, ka pai ake te mahi ngātahi a te katoa, ā, ka nui ake ngā whakatutukitanga ka pā ki ngā tāngata katoa o Aotearoa.

Tā mātou whakarite huringa

1. Kei te kaha ētahi wāhanga o ngā toi Māori, engari me whakapūmau ētahi huarahi.

E mōhio ana mātou e kaha ana ētahi wāhanga o ngā mahi toi Māori i Aotearoa nā ngā mahi tūao me ngā mahi ā-hapori a te Māori. E kaha ana te hiahia ki te mātauranga, ki te tautoko anō hoki i te whakawhanaketanga o ngā ringatoi kia kaha ake ai te kitea i ngā rohe, i te motu, i te ao anō hoki.

Heoi anō, arā ētahi taupā hei whakawhiti mā ngā ringatoi me ngā mātanga Māori e toro ai rātou i ngā tukunga pūtea, e whakarite ai hoki rātou i tētahi umanga pūmau. I tēnei wā, kāore i te pai te hanganga me ngā tukunga pūtea ki ngā toi Māori, ā, kāore i te rite te tohanga ki ngā tūmomo mahi toi, ki ngā rohe me ngā kaituku pūtea.

2. Kei te piki haere te tautoko i ētahi wāhanga o ngā toi Māori, engari me whakawātea ake ētahi wāhanga.

E miramira ana ētahi rangahau e rua o nā noa nei i ngā take o te tautoko me te toro:

- I kitea i te rangahau a Toi Aotearoa i te tau 2017, i New Zealanders and the Arts kei te kaha haere te tautoko a ngā tāngata o Aotearoa i ngā toi Māori, ā, kua kaha ake hoki te hiahiatia o ngā pāpono toi Māori kounga. Heoi anō, nā te uaua o te toro i ngā tūmomo mahi toi i waho atu i ngā tāone matua i iti iho ai te hunga e taetae atu ana.
- I whakaū a The Audience Atlas New Zealand 2017 i te mōhio e hiahia ana te nuinga o ngā tāngata o Aotearoa ki ngā toi Māori, engari kei te iti haere te hunga e taetae atu ana. I te tau 2017, e 44% o te hunga ahurea o Aotearoa i tae ki tētahi whakangahau Māori, ki tētahi taiopenga ahurea, ki tētahi whakaaturanga toi, ki tētahi atu pāpono ahurea, toi Māori rānei i ngā tau e toru kua pahemo. Ka eke tēnei ki te 1.6 miriona ngā pakeke, e 4% iti iho i tērā i tatauhia i te tau 2014.*



Tohunga Whakatere Waka, Tarai Waka Tā Hekenukumaingaiwi Busby me tōna waka hourua, Te Aurere. Nā Norman Heke te whakaahua.

3. Kei te mahi kē mātou, puta noa i te rāngai, ki te whakapiki i te kaha me te āhei ki te whakaputa i ngā toi Māori, engari arā ētahi huarahi e tutuki ai tēnei i a mātou me te tūhono anō i a mātou ki te rāngai toi whānui.






E hiahia ana mātou ki te whakapakari i te rāngai toi Māori kia wātea ai ngā tāngata tokomaha o Aotearoa ki te whai wāhi atu ki ngā toi Māori.

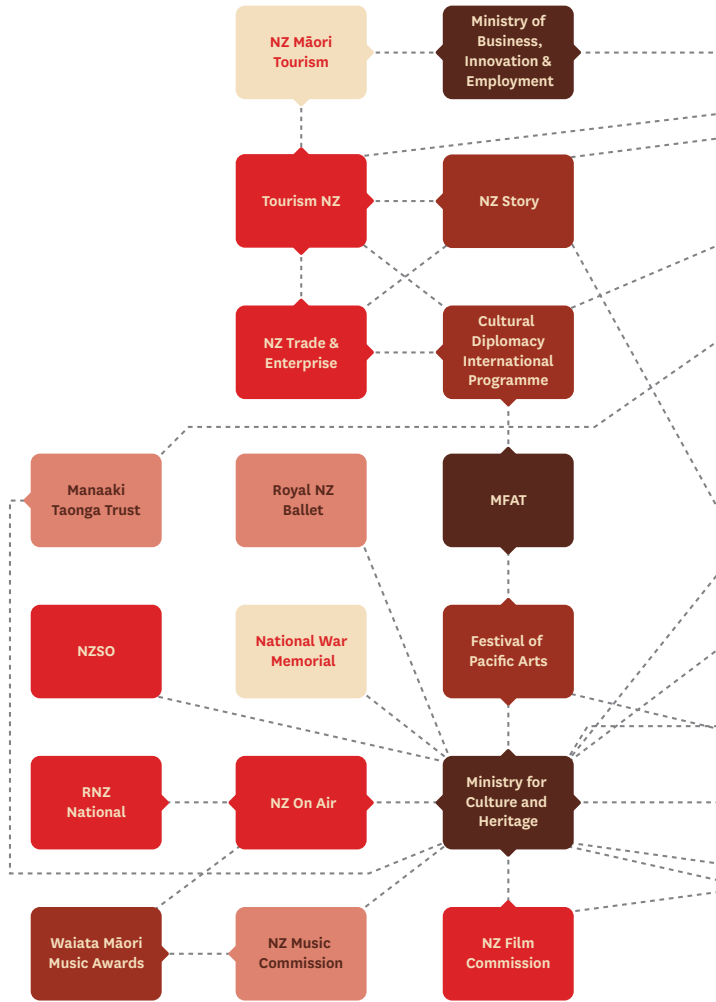
Kua kite nei mātou, mā te whaiwhai i te hiahia o te pāpori ki ngā toi Māori, i tētahi huarahi rerekē, ā, kia nui ake hoki ngā kaupapa e whakaputahia ana i te horopaki Māori me ētahi atu horopaki. Mā tēnei e tirohia ai ngā toi Māori e te pāpori hei wāhanga nui o te tuakiri o Aotearoa e whai painga ana te katoa.

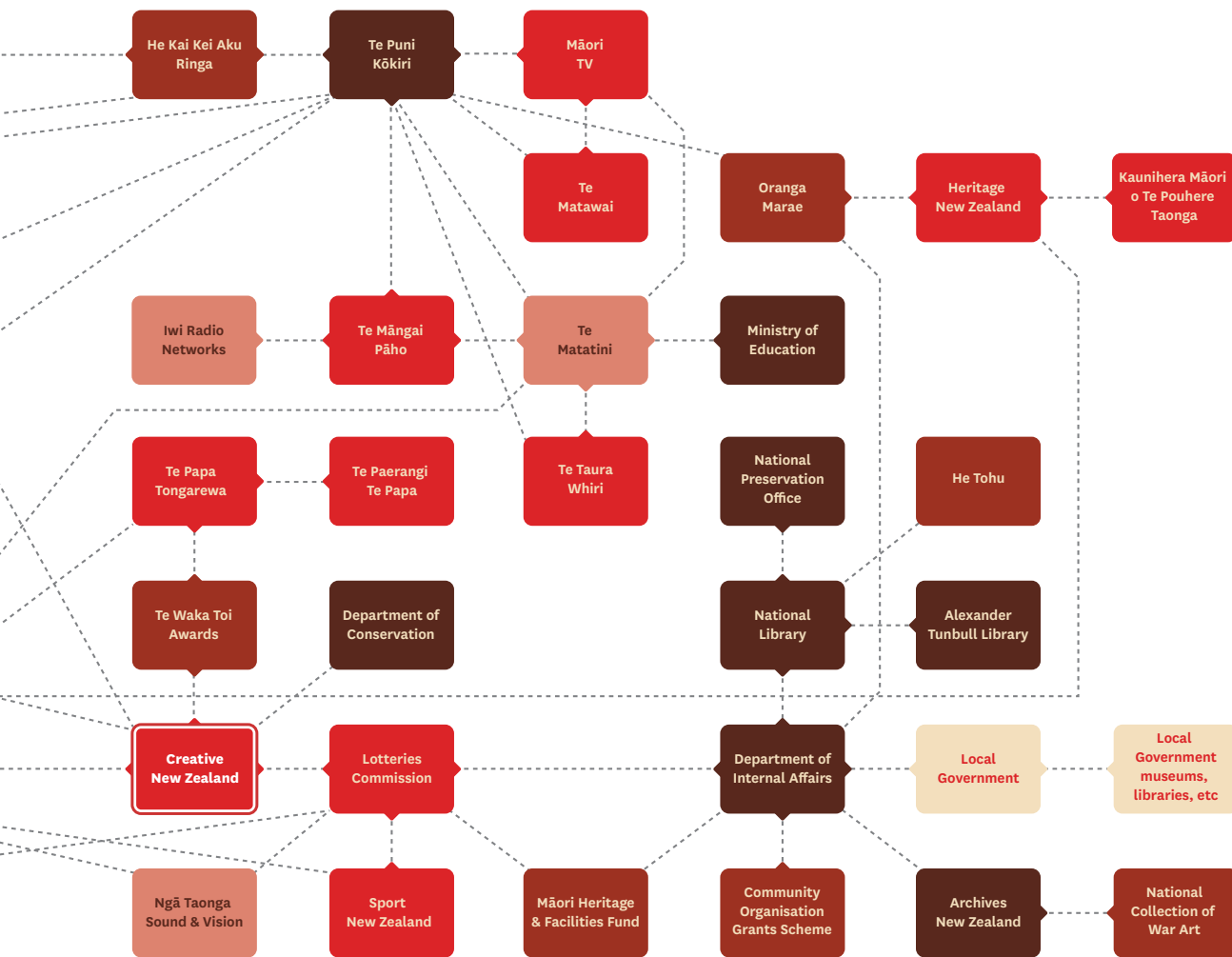
He whakaahua o te tautoko a te Karauna i ngā toi me te ahurea Māori

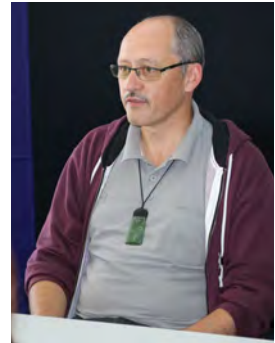
He matatini te hanga o te rāngai tūmatanui o ngā toi me te ahurea o Aotearoa, ā, kei te whakaaturia te tautoko a te Karauna i ngā toi me te ahurea Māori. He whakahaere āhua iti a Toi Aotearoa, engari he mahi whāiti tā mātou hei hāpai i ngā toi Māori.

KEY

-  Central Government Agency
-  Crown or Statutory Entity (including Creative New Zealand)
-  Funded for Services
-  Crown Interest
-  Programme, Initiative, Agreement or Event







Tā Te Rāngai Titiro

E mārama ake ai mātou ki te titiro a te rāngai i huri mātou i te motu ki te whakarongo ki ngā wheako o ngā mātanga toi Māori me

Ka motu ngā here i te mea ka mahi takitahi te nuinga o ngā ringatoi, ā, he pērā anō hoki te mahi a ngā Manatū me ngā umanga tuku pūtea.

HE WHAKAARO NŌ TE HUI

ō rātou nā hapori. I waenga i te mārama o Whiringa-ā-nuku i te tau 2017, me te marama o Haratua i te tau 2018, i whakatūria e mātou ētahi hui me ētahi awheawhe e 28. I tae mātou ki ētahi taiopenga me ētahi pāpono, i tūtahi hoki mātou ki ētahi atu umanga tuku pūtea ki ngā toi me te ahurea, ā, i kapohia hoki ētahi tirohanga i tētahi uiui whānui i te ipurangi. Kua whakaurua ki raro nei ētahi taurira o tā mātou i rongo ai, ā, kei te pae tukutuku o Toi Aotearoa te roanga atu.*

Te tūhono ki ētahi atu

Mā te ārahitanga, te whakamāmā ake i ngā nekehanga me te whakapiki i te auahatanga, puta noa i te rāngai tukunga pūtea ahurea, e manawaroa ake ai

I tā mātou whakapā atu, i rongo mātou i te whakaaro ka taea e ngā umanga ahurea me ētahi atu whakahaere tā rātou mahi ngātahi te whakakaha ake kia ārahi ā-rautaki ai rātou, kia tautoko ai hoki rātou i ngā wawata o ngā mātanga me ngā kaiārahi toi Māori. Ka taea hoki te whakamāmā ngā huarahi tuku pūtea me

te whakarite i ētahi huarahi hou, auaha hoki e torona ai ngā tukunga pūtea.

Mā te pōwhiri i ētahi atu ki te tūhono mai e kotahi mai ai ngā pūkenga o tēnā, o tēnā ki te whakarite i ētahi āhuatanga hou mō te rāngai me te toro anō hoki ki ētahi marea hou, whānui anō hoki.



Tā mātou whakarite huringa

Mō te taha ki ngā āhuatanga ka taea e mātou te whakarerekē, e toru ngā kaupapa whānui ka puta mai:

1. Mā te tautoko tonu i te whakawhanaketanga o te hanganga pakari e whakaū te angitu tauroa

I rongō mātou, i ētahi wāhi o te motu kāore i te nui ngā papa me ngā wāhi auaha mō ngā kaupapa Māori. Nō reira, kāore e nui ngā huarahi hei whai mā ngā mātanga me ngā ringatoi Māori ki te mahi ngātahi, ki te whakapakari i ā rātou mahi me te whakawhānui hoki i te kitea o ā rātou mahi.

Mā te whakawhānui i te hanganga ā-rohe, ā-motu anō hoki (pēnei i ngā taiwhanga whakaatu, ngā papa whakangahau me ngā awheawhe mahi ngātahi) e tautokona ai te whakawhanaketanga o ngā mahi toi Māori. Mā tēnei anō pea e kaha ake ai te toro a te pāpori i te nui o ngā huarahi hei whai mā rātou ki te mātai i ngā toi Māori.

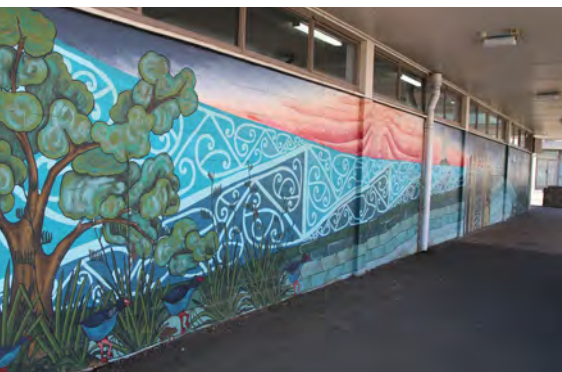
Ki te titiro koe ki te rāngai toi auraki, te āhua nei e ora ana, hui nui ngā mahi e mahia ana, he nui ngā papa, ngā whare whakaatu toi me ngā whare pupuri taonga, engari kāore e tika tērā kōrero mō te rāngai toi Māori. Ko tā mātou e hiahia nei, ko ngā wāhi ahurea Māori e tūhono tahi ai, e wānanga tahi ai, e waihanganga tahi ai, e whakakite tahi ai, e rapu tautoko ā-pakihi ai hoki ngā ringatoi Māori, ā, puta noa i te motu whānui.

HE WHAKAARO NŌ TE HUI



800+

800+ Māori artists and organisations engaged kanohi-ki-te-kanohi and shared their stories



28

Hui and workshops held across the motu

Kei te nui te kūare ki te uara o ngā toi me te ahurea Māori ki te whakapakaritanga o te motu.

HE WHAKAARO NŌ TE HUI

2. Mā te uara i ngā toi Māori e piki ai te kitea o ngā toi Māori

Ko tā mātou i rongō ai, kei te iti noa iho te kitea o ngā toi Māori i te hapori whānui i waho atu i ngā tāone matua. He mea nui te kitea o ngā toi Māori i te mea ka whakaatahia mai e kaha ake ana te whakamaiohatanga me te māramatanga o te whai tikanga o te Māori hei tangata whenua i Aotearoa, hei hoa hoki mō te Karauna i te Tiriti o Waitangi.

Mā te whakawhanake me te tautoko i ngā āhuatanga o te anga 'pātaka' (kei te whārangi 14 ngā whakamārama) i roto i ngā hapori e whakakahangia ai, e whakatairangahia ai hoki te uara o ngā toi Māori i te hapori whānui. Mā tētahi, mā ētahi kaitaunaki kaha ngā ringatoi me te rāngai whānui e āwhina ki te whakapuaki i te uara o ngā toi Māori ki ngā hapori.



3. Me whakarite huringa, puta noa i te rāngai toi whānui, kaua noa iho i te rāngai toi Māori, e kitea ai ētahi huringa tino nui, pūmau anō hoki

Kāore i te pērā rawa te kaha o te aro ki ngā toi Māori, pērā i ētahi atu toi auraki, ahakoa rā he wāhanga nui tēnei nō te whakapakaritanga o tō tātou tuakiri ahurei.

HE WHAKAARO NŌ TE HUI

I rongo mātou i te hiahia o ngā mātanga toi Māori ki te whakaatu i ā rātou nā mahi ki tētahi marea whānui ake, ā, ko te huarahi tika e tutuki ai tērā ko te mahi ngātahi ki ngā whakahaere o te rāngai toi kua tū kē hei kaitaunaki kaha i te whai tikanga o ngā toi Māori.

Mā te whakapiki i tā mātou mahi i te taha o ngā kiritaki o te Kohinga Haumi e tautoko nei mātou kia kitea ai ngā putanga toi Māori, e whakaatu mai i te ū ki ngā toi Māori me te toro anō hoki ki ngā hapori me ngā māketete whānui.



193

People participated in the online survey



THE LAND OF TARA NĀ JOHNSON WITEHIRA, POUAKA WHAKAATURANGA

Nā Yvonne Liew te whakaahua.

03

Te Rautaki

MOEMOEĀ

E kitea ana ngā toi Māori i ngā wāhi katoa, e kaingākauhia ana hoki hei wāhanga nō te tuakiri motuhake o Aotearoa e whakamaiohatia ana, huri noa i te ao.

Te Rautaki

Te anga whakamua

E angitu ai te whakaputanga o tā mātou rautaki me tūhono mātou ki ētahi atu, ā, me whakarite huringa hoki mātou.

Te hono ki ētahi atu

Te mahi ngātahi ki ngā whakahaere ā-Karauna me ētahi umanga ahurea matua

Te mahi ngātahi ki te whakarite i tētahi taiao e tautoko ana i ngā toi Māori.

Ka whai a Te Hā o ngā Toi ki te mahi ngātahi ki ngā hapori, ki ngā whakahaere ā-rohe, ā-motu hoki me ētahi atu ki te whakawhanake i tētahi rārangi take tōpū mō ngā toi Māori mā te whakaū i te wāhi ki nga toi me te ahurea i ngā putanga ā-pāpori, ā-ahurea, ā-ōhanga, ā-taiao anō hoki. Ka tīmata mātou i te pōwhiri i ētahi atu whakahaere ā-Karauna me ētahi umanga ahurea matua e whai wāhi matua ana ki te whakawhanake i ngā toi Māori ki te mahi i tō mātou taha.

Tā mātou whakarite huringa

Ka whakapau mātou i ō mātou kaha ki te:

1. Whakawhanake i ngā mahi toi Māori

Ka aro a Te Hā o ngā Toi ki te āhua o tā mātou tautoko i ngā mātanga toi Māori ki te whakapakari i ngā pūkenga me ngā mahi e hiahiatia ana e rātou e eke panuku ai rātou i Aotearoa, i te ao anō hoki.

Te whakaū i te rongo kairangi o ngā toi Māori me ōna mātanga.

2. Whakakaha i te toro a te pāpori ki ngā toi Māori

Te whakatairanga i te whakapāpā, i te wātea me te kitea (o ngā toi Māori).

Ka aro a Te Hā o ngā Toi ki te āhua o tā mātou whakapiki i te whai wāhi me te toro a ngā tāngata o Aotearoa ki ngā toi Māori, puta noa i te motu, puta noa hoki i ngā tūmomo mahi toi.

3. Whakapakari i te rāngai ki te whakatutuki haere i ngā wawata mō ngā toi Māori

Te whakakaha i te tautoko a te rāngai i ngā toi Māori me te mātauranga Māori.

Ka aro a Te Hā o ngā Toi ki te āhua o tā mātou whakamārama i tā mātou whai wāhi, tautoko hoki i te Kohinga Haumi ki te whakaputa i ngā toi Māori me te mātauranga Māori.

E ū ana mātou ki te tautoko i ngā toi Māori, puta noa i te rāngai toi. Hei tīmatanga ake, kei te pīrangī mōhio mātou ki tōna āhua ināianei kia mōhio ai mātou me whakapau ō mātou kaha i whea.

Ka aha mātou?

E aro ana a Te Hā o ngā Toi ki te mahi ngātahi ki ētahi atu me te whakapakari i ā mātou mahi i ētahi wāhanga matua e toru mā te whakaaweawe me te whakamahi i ā mātou rauemi me ā mātou rangahau kia huri ai ētahi āhuatanga.

Ka whakaputa mātou i tētahi mahere tautoko i whakatinanatanga i te wāhanga tuatahi o te tau 2019, e whakamārama ana i te āhua o tā mātou mahi i te taha o te rāngai ki te hoahoa, ki te whakarato me te aroturuki i ngā mahi me ngā putanga o Te Hā o ngā Toi. Ka arotakengia te mahere i ētahi wā.

Te tūhono ki ētahi atu

Te mahi ngātahi ki ngā whakahaere ā-Karauna me ngā umanga ahurea matua

I tā mātou whakapā atu, i rongo mātou ka taea e ngā umanga ahurea ā-Karauna me ētahi atu whakahaere tā rātou mahi ngātahi te whakakaha ake kia ārahi ā-rautaki ai, kia rangahau ai, kia tauanki ai hoki rātou i ngā wawata o ngā mātanga me ngā kaiārahi toi Māori. Hei whaiwhai ake, ka pōwhiri mātou i ngā umanga ahurea ā-Karauna me ētahi atu whakahaere ki te mahi ngātahi ki te whakapakari i ngā toi Māori. I roto i te wā, ka whai mātou ki te mahi ngātahi ki te rāngai tūmataiti whānui i a rātou ka tūhono mai ki a mātou i tēnei haerenga.



TOHUNGA WHAKAIRO LYONEL GRANT, KEI TŌNA TAUPUNI MAHI

Nā Norman Heke te whakaahua.

Ka whakahoa mātou ki ētahi atu ki te kawē i tētahi rārangi take kotahi hei whakawhanake i ngā toi Māori mā te:

- pōwhiri i ētahi kaituku pūtea matua me ētahi kaiwhakatau whakaaro ki te hono mai i a mātou ka whakatinana i Te Hā o ngā Toi
- mahi ngātahi ki ētahi atu whakahaere ā-Karauna me ētahi umanga ahurea matua ki te whakatau i tā rātou ū ki te mahi ngātahi
- mahi ngātahi ki te ārahi ā-rautaki e puta mai ai ētahi atu huarahi ki te mahi ngātahi, ki te mahi tōpū hoki ki te whakawhanake i ngā toi Māori.

He mahi hou ki a mātou te tuku i te reo karanga ki ētahi atu umanga ahurea, whakahaere hoki ki te tūhono mai i a mātou ka whakatinana i Te Hā o ngā Toi. He wāhanga nui tēnei nō tā mātou ū ki te whakapūmau i ngā mātāpono o Te Waka Toi, mā te mahi tika, puta noa i Toi Aotearoa me te rāngai tūmatanui ki te poipoi me te whakawhanake i ngā toi Māori.



Kaiwaiata Hinewehi Mohi. Nāna te whakaahua.

Tā mātou whakarite huringa

1. Te whakapakari i te whakawhanaketanga o te hanga toi Māori

Ko tā mātou i rongō ai, e hiahia ana ngā ringatoi Māori ki ētahi atu huarahi e taea ai e rātou ā rātou mahi toi te whakawhanake i te kāinga, i tāwāhi anō hoki, e taea ai hoki te mahi ki ētahi hapori me te uru ki ngā whakawhitinga kōrero whānui a ngā hapori iwi taketake o Te Moana-nui-a-Kiwa, ā, huri noa hoki i te ao, ā, kua tahuri mai rātou ki a mātou ki te āwhina atu.

Hei whaiwhai ake, ka whakakaha mātou i tā mātou tautoko i ngā mahi takitahi, ā, ka whakanui hoki i ngā huarahi mō ngā ringatoi ki te mahi i roto, i te taha anō o ngā hapori. E tautoko ā-pūtea kē ana mātou i ētahi hōtaka whakarite huringa, engari kua tautuhi mātou i ētahi atu hei whakarerekē mā mātou e nui ake ai ngā whakatutukitanga.

Ka whakapakari mātou i ā mātou haumi me ā mātou hōtaka kia pai ake ai te tautoko i ngā toi Māori mā te:

- whakanui i ngā kaupapa toi Māori e waihangahia ana, e whakaputahia ana hoki, puta noa i ngā tūmomo mahi toi katoa
- whakawhanake i ngā whakawhitinga ā-rohe, ā-motu hoki mō ngā mātanga me ngā ringatoi Māori hei tautoko i te tūhonotanga, i te mahi ngātahi me te mahi hou
- tautoko tonu me te poipoi i ngā mātanga me ngā ringatoi Māori e pihia ake ana.

Ko tētahi o ngā wāhanga matua ka kite nei koe i te whakatinanatanga o Te Hā o ngā Toi ko tā mātou arotake i tā mātou haumi i ngā toi Māori, puta noa i ā mātou hōtaka, me te hiahia ki te whakapiki i te nui o te pūtea e wātea ana hei whakawhanake, hei whakaputa hoki i ngā toi Māori. He wāhanga tēnei nō tā mātou ū ki te whakapūmau i ngā

mātāpono o Te Waka Toi mā te whakaū i mana me te uara o ngā mahi toi Māori me te whakaū i ngā haumi kia eke ai ngā mahi ā-ahurea, ā-toi hoki ki tōna taumata kairangi hei whakawhanake i ngā toi Māori.

2. Te whakakaha i te toro a te pāpori ki ngā toi Māori

I rongo mātou, kāore i te nui te kitea o ngā toi Māori i te hapori whānui, i waho atu hoki i ngā tāone matua.

Hei whaiwhai ake, ka whakapiki mātou i te nui me ngā tūmomo huarahi e whai wāhi ai ngā tāngata o Aotearoa ki ngā toi Māori.

He nui ā mātou hōtaka hei whakakaha i te whakapā mai a ētahi, engari arā ētahi huarahi hei whai e wātea ake ai ētahi ki te whakapā mai, tae rawa mai ki ngā wāhi kei waho i ngā tāone matua. He mea nui hoki te whakawātea i ētahi wāhi e rangona ai te rangatahi me te whakaputa hoki i ngā wāhi he tokomaha ngā Māori e noho ana.

Ka hanga mātou i tā mātou hōtaka hei whakakaha i te toro mai a te pāpori ki ngā toi Māori mā te:

- whakatika i ngā hōtaka kia nui ake ai ngā huarahi whakakaha i te whakapā mai a ētahi ki ngā toi Māori, tae rawa mai ki ngā wāhi kei waho i ngā tāone matua
- mahi ngātahi ki te rāngai me te whai i ngā tino tikanga hoahoa ratonga (kei te rārangi kupu ngā whakamārama, kei te whārangi 8) ki te hoahoa, ki te whakawhanake, ki te whakatinana hoki i tētahi kaupapa kua whakaritea ki te tauira o te Whare Tapere mā tētahi marea whānui tonu.

Ko te whai i ngā tikanga hoahoa ratonga tētahi mahi hou ki a Toi Aotearoa. He wāhanga tēnei nō tā mātou āta ū ki te whakapūmau i ngā mātāpono o Te Waka Toi kia pai ake ai tā mātou mahi ki te rāngai ki te whakarite rongōā e tutuki ai ā mātou whāinga.



Te Ao – Karetao Pūoro. Ko James Webster me Hinemoa Jones. (Guam, 2016).

3. Te whakapakari i te rāngai ki te hāpai i ngā wawata mō ngā toi Māori

I rongo mātou, he taonga ngā toi Māori hei hāpai mā te motu, pēnei i te reo Māori, me tū te rāngai katoa hei kaitaunaki i ngā mahi a ngā mātanga Māori me te whakawhanake i ngā marea mō ngā mahi Māori.

Hei whaiwhai ake, ka whakatika mātou i tā mātou mahi i te taha o ētahi atu whakahaere toi kua tū kē hei tautoko i ngā toi Māori me te whakaputa wheako ki te pāpori. E taunaki kē ana mātou i ngā wawata mō ngā toi Māori, engari arā ētahi atu huarahi e tika ake ai te mahi ngātahi ki te whakarite i ētahi tikanga mahi hou, auaha hoki i roto i ngā hanganga e tū nei.

Ka taunaki mātou i ngā wawata mō ngā toi Māori mā te:

- whakamārama i te whai wāhi a Toi Aotearoa me te tautoko a te Kohinga Haumi ki te taunaki i ngā toi Māori
- toha i ngā tikanga o te whakatairanga, o te tautoko me te taunaki i ngā toi Māori, puta noa i te rāngai toi.

Ko tētahi wāhanga o tā mātou ū ki te whakapūmau i ngā mātāpono o Te Waka Toi ko te aro ki ā mātou mahi whakarite huringa i te Kohinga Haumi o Toi Aotearoa kia horapa ai ngā tikanga mahi pai. Ka tutuki tēnei mā te whakawhitiwhiti kōrero me te tūhonohono kia toitū tonu ai, kia uaratia tonutia ai, kia whakawhanakehia tonutia ai hoki te āhua o ngā toi Māori.



ROOPU NGAHOA MAITAI, ALIEN WEAPONRY

Nā Piotr Kwasnik te whakaahua.

04

Te Anamata

Ka kitea te angitu o Te Hā o ngā Toi i ngā rohe, i te motu, i te ao anō hoki. Kia whakaaro mātou ki te anamata o te pānga o Te Hā o ngā Toi ki ngā mātanga o **ngā toi Māori, ki te pāpori me te rāngai whānui o nga toi.**

Moemoeā

E kitea ana ngā toi Māori i ngā wāhi katoa, e kaingākauhia ana hoki hei wāhanga nō te tuakiri motuhake o Aotearoa e whakamaiohatia ana, huri noa i te ao.

Te tūhono ki ētahi atu

Te mahi ngātahi ki ngā whakahaere ā-Karauna me ētahi umanga ahurea matua

E mahi ngātahi ana ki te whakarite i tētahi taiao e tautoko ana i ngā toi Māori.

E rōnaki ana tā te rāngai whakaputa i ngā putanga mō ngā toi Māori

Ka nui ake te mahi ngātahi, puta noa i ngā whakahaere ā-Karauna me ngā umanga ahurea matua

Mā ngā putanga e kaha ake ai te mahi ngātahi

Ka ū ngā whakahaere ā-Karauna me ngā umanga ahurea matua ki te mahi ngātahi

Tā mātou whakarite huringa

Te whakapakari i te whakawhanaketanga o te hanga toi Māori

Ka whakapakari i ngā toi Māori me te rongo kairangi o ngā mātanga toi Māori.

He tokomaha ake ngā mātanga Māori e mahi ana i ngā tūmomo mahi toi katoa

He huarahi anō hei whakapakari i ngā umanga me ngā āheinga

He whānui ngā tūmomo mahi me ngā huarahi whakawhanake umanga i te kāinga, i tawāhi anō hoki

Ka nui ake ngā huarahi e uru ai te tangata ki te umanga o ngā toi Māori, e whakawhanakehia ai hoki te hanga toi

ME PĒWHEA MĀTOU E MŌHIO AI MEHEMEA KEI TE ANGITU MĀTOU?

E whakaata ana ēnei ara poutama i ō mātou kokenga i tā mātou mahi ngātahi ki ētahi atu ki te whakatutuki i tō mātou moemoeā.

Te whakakaha i te toro a te pāpori ki ngā toi Māori

Ka whakatairanga i te whakapā, i te toro me te kitea.

Ka pā ngā tāngata katoa o Aotearoa ki ngā toi Māori

Ka wātea ngā toi Māori
ki ngā wāhi kei waho atu
i ngā tāone matua

Ka puta mai ētahi taurira
hanganga Māori hou, ā,
e tautokona ana ki te
whakanui i te whai
wāhitanga me ngā wheako

Ka nui ake ngā
huarahi e kitea ai
ngā toi Māori

Te whakapakari i te rāngai ki te hāpai i ngā wawata mō ngā toi Māori

Te whakakaha i te tautoko a te rāngai i ngā toi Māori me te
mātauranga Māori.

Ka whakatairanga te rāngai toi i ngā toi Māori me te mātauranga Māori

Ka kite te pāpori i te
rāngai toi whānui hei
kaiwhakatairanga i ngā
toi Māori

Ka whakapiki te rāngai
toi i tana tautoko
i ngā putanga o ngā
toi Māori

E āhua tautoko ana
te rāngai toi i ngā
toi Māori me te
mātauranga Māori

Te Anamata

He Kōrero Anamata

Kia anga te titiro ki ngā tau tekau kei mua i te aroaro, kua eke te rāngai auaha Māori ki tētahi taumata kāore anō kia ekea. Ka kite tātou i tētahi whenua haumao e **kaingākau** nui ana, **e rite tonu ana hoki tana whai wāhi** atu ki ngā toi Māori.

Hei reira, ka whaihua a Aotearoa i te whakatinanatanga o tētahi rautaki ā-motu mō ngā toi Māori, arā Te Hā o ngā Toi. Ko ngā toi Māori tētahi kaitohu ahurei i a Aotearoa me tā tātou noho i Te Moana-nui-a-Kiwa.

Kua whānui ake te māramatanga mō **Te Tiriti o Waitangi** hei tuhinga tūāpapa, ā, kua pakari ake hoki te mahi ngātahi ki te Māori i runga i ngā anga **mātauranga Māori**. Ka mahi ngātahi te rāngai toi, ahurea, taonga tuku iho anō hoki ki te hāpai i tētahi **rārangi take kotahi** e pā ana ki ngā toi me te ahurea i Aotearoa hei painga mō te ao Māori.

Kua huri te tai i te karenga o ngā wai o te ao toi, ā, ka tino taea tētahi umanga pūmau i roto i ngā toi te whai. Ka kitea te whai painga o te haumi ā-pāpori i te reo Māori, i ngā toi Māori me ngā ringatoi Māori (i ngā taumata ā-rohe, ā-motu hoki) i te motu, i te ao anō hoki.

Ko te kitea (o ngā toi Māori) te ara ki te angitu. E whakaurua ana ngā toi Māori ki roto i ngā kura, ā, e whakamahi ana hoki ngā pakihī i te whai wāhitanga ahurei a ngā toi Māori i te ao. Ko ngā toi me te ahurea ngā tohu o te hauora, ā, nā tērā i whakaurua ai ngā toi, tae atu ki ngā toi Māori ki roto i ngā rautaki tauroa ā-pāpori, ā-ōhanga, ā-taiao anō hoki.

Kua kitea i roto i ngā rongoā ā-rohe mō ngā take ā-rohe te āhua o te pānga o Te Hā o ngā Toi ki ngā mahi o ia rā. Nā te whakaarotau i ngā toi me te ahurea i ngā rohe i āta whai wāhi ai **ngā mahere tauroa ā-rohe, ngā kaupapa here me ngā rautaki** ki te haumi i ngā toi Māori i ngā rohe. He nui ngā rohe kei reira **ētahi ‘pokapū’ toi Māori, tūhonotanga ringatoi ā-rohe rānei** hei wāhi e hui ai ngā ringatoi ki te tuku mātauranga, ki te mahi ngātahi, ki te waihanga, ki te whakaatu me te hari haere i ā rātou nā mahi. Mā ēnei ‘pokapū’ e whakatairanga te toitūtanga mā te whakarato i ngā whakawhanaketanga ā-pakihī me ngā tohutohu whakatairanga.

Nā tēnei haumi ā-rohe i ngā toi Māori, tāpiri atu hoki ki te angitu o ngā tūhonotanga ringatoi ā-rohe i kaha ake ai te kitea o ngā toi Māori e te pāpori whānui, tae atu ki te Pākehā kāore anō pea i tino wātea i mua atu ki te toro i ngā toi Māori. Mā te whakakite i ngā toi Māori e kaha ake ai te hiahiatia mā ngā toi ā-pāpori, te hari haere i ngā mahi, ngā pāpono whakaihīhi, ngā taiopenga me te whakanoho i ngā mahi Māori i roto i ngā whare whakaatu toi, ngā whare pupuri taonga me ētahi atu wāhi tūmatanui, ā, ka hoki anō tēnei ara ki tōna tīmatanga.



Ringa rehe toi, Piri Cowie, Moko me ngā Kuri, kei Ōtautahi (Ngāi Tahu Property Development). Nā Norman Heke te whakaahua.

Mā te mahi ngātahi me te whakanui i te māramatanga me te mātauranga e whakawhitiwhitihia ana e kite ai mātou i ētahi mahi toi Māori kounga, motuhenga anō hoki e whakaputahia ana, e whakanuia ana anō hoki, huri noa i te ao.

Kia tokomaha ake ngā tāngata o Aotearoa e whai wāhi ana ki ngā kaupapa toi, ahurea anō hoki, ka kitea e whakarangatirahia ana ngā ao o tēnā, o tēnā, ā, ka whakanuia hoki tō tātou wāhi i te ao.

Ngā whakahaere

Nā te Arts Council i whakarite tā Toi Aotearoa rautaki whakahaere, tae atu ki Te Hā o ngā Toi. 13 ngā tāngata o te Arts Council, he mea kopou rātou e te Minita o te Manatū Taonga.

He mea ārahi te Arts Council i te whakawhanaketanga o Te Hā o ngā Toi e ētahi o ōna tāngata tokowhā i whakatū i Te Komiti Māori tae atu ki te marama o Tihema, i te tau 2018:

- Suzanne Ellison (Kai Tahu me Te Atiawa)
- Professor Tairahia Black (Ngāi Tūhoe, Ngāti Tūwharetoa me Te Whānau-ā-Apanui)
- Dean Whiting (Te Whānau-ā-Apanui)
- Karl Johnstone (Rongowhakaata, Te Aitanga-ā-Mahaki me Ngāi Tāmanuhiri)

 facebook.com/creativenz

 @creativenz

 @creativenz

 info@creativenz.govt.nz

 www.creativenz.govt.nz

 0800 CREATIVE (0800 273 284)

Supported by the New Zealand government through:





HE KURA E HUNA ANA, NĀ TAKI RUA PRODUCTIONS

Nā Philip Merry te whakaahua